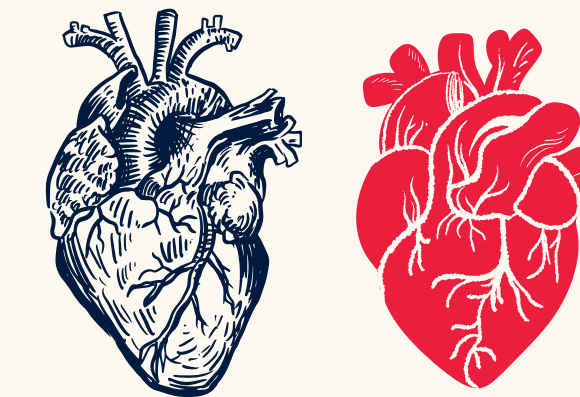




# SPONSORSHIP OPPORTUNITIES FOR THE INTERNATIONAL SOCIETY FOR HEART RESEARCH NORTH AMERICAN SECTION MEETING



MAY 31 – JUNE 3, 2026  
TWIN CITIES, MINNESOTA

## PARTNERSHIP OPTIONS

### LEVELS

Premier – \$50,000

Platinum – \$25,000

Gold – \$15,000

Silver – \$10,000

Bronze – \$5,000

Session – \$2,500  
(chosen topic)

Vendor – \$5,000

To support the ISHR-NAS 2026  
or for inquiries, contact  
[ISHRNAS2026@umn.edu](mailto:ISHRNAS2026@umn.edu)

## SPONSORSHIP LEVELS & BENEFITS

|  | PREMIER<br>\$50,000 | PLATINUM<br>\$25,000 | GOLD<br>\$15,000 | SILVER<br>\$10,000 | BRONZE<br>\$5,000 | SESSION<br>\$2,500 | VENDOR<br>\$5,000 |
|--|---------------------|----------------------|------------------|--------------------|-------------------|--------------------|-------------------|
| Print and digital program acknowledgement                  | ✓                   | ✓                    | ✓                | ✓                  | ✓                 | ✓                  | ✓                 |
| Attendee contact list for outreach                         | ✓                   | ✓                    | ✓                | ✓                  | ✓                 |                    |                   |
| Complimentary conference registration(s) *                 | ✓ (4)               | ✓ (4)                | ✓ (2)            | ✓ (2)              | ✓                 |                    |                   |
| Promotional emails and social media recognition            | ✓                   | ✓                    | ✓                | ✓                  |                   |                    |                   |
| Recognition on ISHR-NAS website with company logo and link | ✓                   | ✓                    | ✓                |                    |                   |                    |                   |
| Exhibit table  | ✓                   | ✓                    |                  |                    |                   |                    | ✓                 |
| Recognition at plenary session                             | ✓                   |                      |                  |                    |                   |                    |                   |
| Full page ad in print and digital program                  | ✓                   |                      |                  |                    |                   |                    |                   |
| Recognition as sponsor at chosen session                   |                     |                      |                  |                    |                   | ✓                  |                   |

## OTHER OPPORTUNITIES

### BREAKFAST

DEI – \$10,000

Women’s Initiative – \$10,000

### DINNER

Banquet – \$20,000 (all)

President’s Dinner – \$10,000 (speakers/leadership)

### SOCIAL

2 Poster Sessions \$20,000/each

ECI/MCI Event – \$20,000

Coffee – \$10,000



DIVISION OF  
CARDIOVASCULAR MEDICINE  
UNIVERSITY OF MINNESOTA  
Driven to Discover®



INTEGRATIVE BIOLOGY AND PHYSIOLOGY  
MEDICAL SCHOOL  
UNIVERSITY OF MINNESOTA  
Driven to Discover®



Lillehei Heart Institute  
UNIVERSITY OF MINNESOTA  
Driven to Discover®



International Society  
for Heart Research  
North American Section